

AIRTEC

INTERNATIONAL LTD

40 COUPER STREET, GLASGOW, G4 0DL, SCOTLAND, UK

TEL : 0141-552-5591 FAX : 0141-552-5064

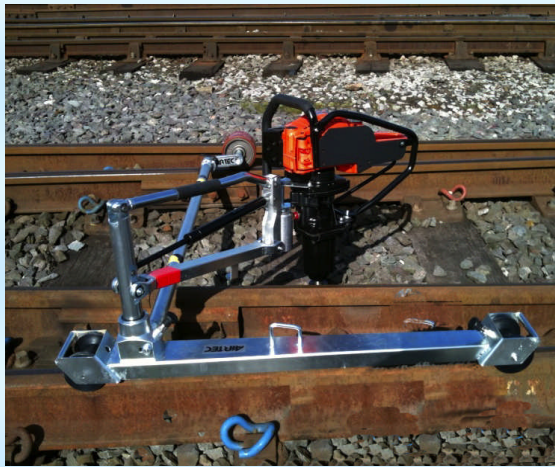
E Mail : enquiries@airtecinternational.com

Web : www.airtecinternational.com

MASTER TROLLEY

SPECIFICATION

<u>Weight</u>	<u>Kgs</u>	<u>Lbs</u>
Wheel	9.6	21
Outrigger Bar	2.9	6 ½
Main Body	16.7	36 ¾
Total	29.2	45 ¼
<u>Dimensions Assembled</u>		
Length	1080	42 ½"
Width	1625	64"
Height	870	34 ¼"
Open		
Locked	440	17 ¼"



1750.0100

When dis-assembled fits easily into a small car boot

FEATURES

- Adjustable arm for use with different weight tools.
- Wheel brake
- Can be assembled/dismantled in a few minutes without the use of tools.
- Use vertically or horizontally
- Main Body can be locked down for easy safe transportation
- Insulated Wheels
- Can be inclined up to 5°

ACCESSORIES

Kit for horizontal use
2801.7560



Bracket for vertical use
2801.7550



The Trolley is made for use on standard track 1435mm.

It is possible for us to supply a different length of bar so the trolley can be used on other track gauges.

CD showing how to assemble Trolley available on request